

# MONTHLY MEMBERSHIP PROGRESS REPORT

LOCATION NORTH CAROLINA

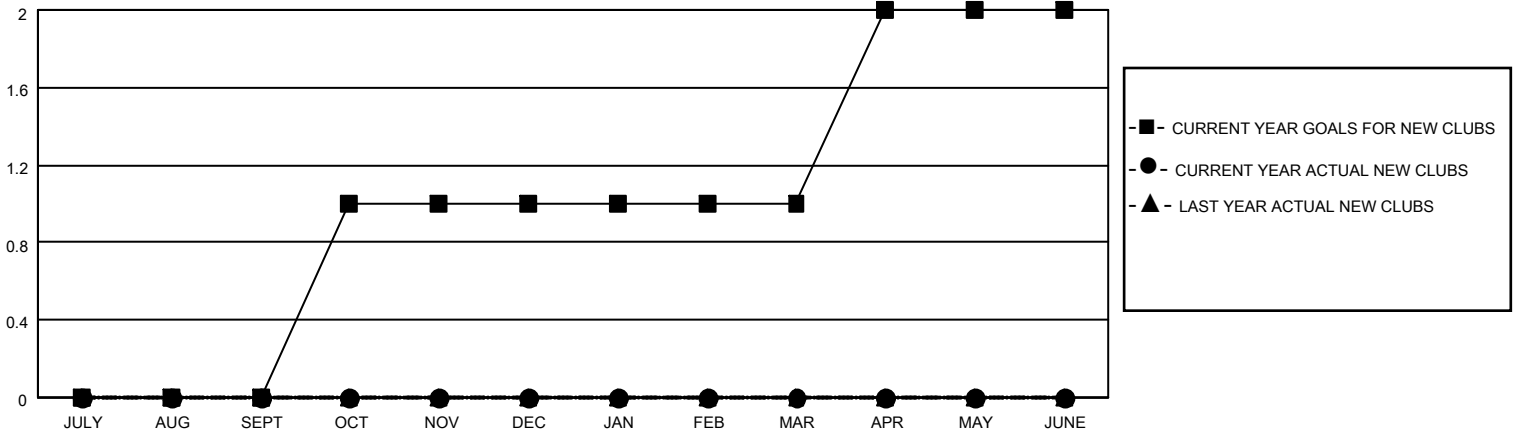
District 31 L

Results as of: 5/31/2021

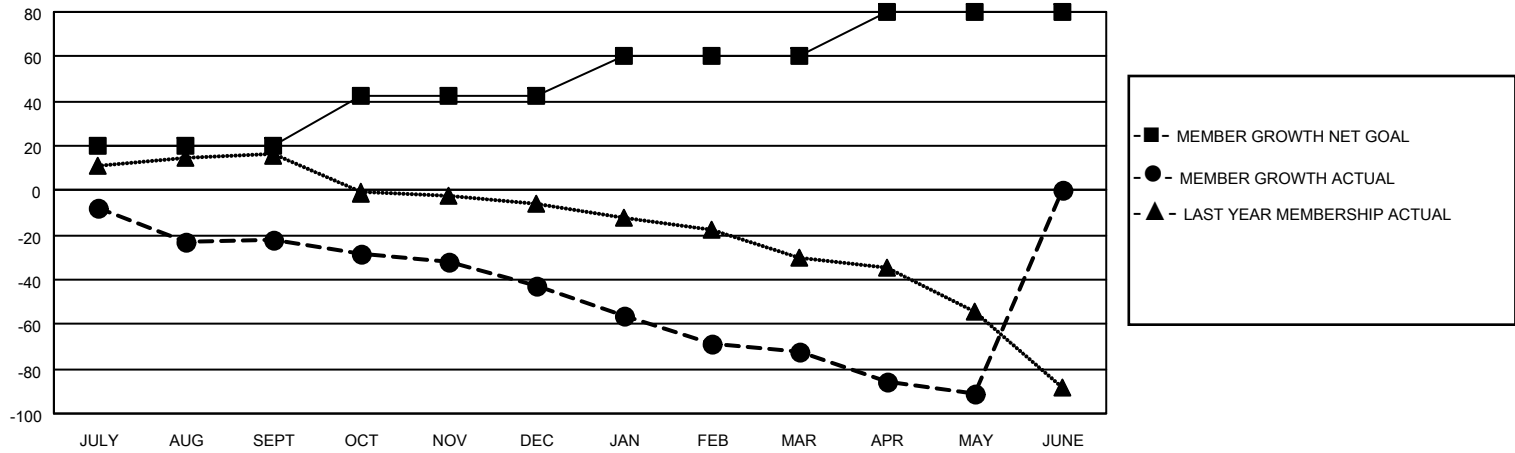
Clubs			
RESULTS FOR 2020-2021			
QUARTER	NEW CLUB GOAL	NEW CLUBS	DROPPED CLUBS
JULY/AUG/SEPT	0	0	1
OCT/NOV/DEC	1	0	0
JAN/FEB/MAR	0	0	2
APR/MAY/JUNE	1	0	0

Members			
RESULTS FOR 2020-2021			
QUARTER	MEMBER GROWTH NET GOAL	MEMBER GROWTH ACTUAL	DROPPED MEMBERS ACTUAL (including transfers)
JULY/AUG/SEPT	20	11	32
OCT/NOV/DEC	22	6	26
JAN/FEB/MAR	18	17	41
APR/MAY/JUNE	20	2	21

**GOALS AND ACTUAL NEW CLUBS CUMULATIVE**



**GOALS AND ACTUAL MEMBERS CUMULATIVE**



DROPPED CLUBS: 3	14 CLUBS OF 58 ADDED 1 OR MORE NEW MEMBERS	<u>GENDER DISTRIBUTION</u>
<u>DROPPED MEMBERS</u>	<a href="#">CLICK HERE FOR CUMULATIVE MEMBERSHIP DATA</a>	MALE 568 (61.54%)
DECEASED 27		FEMALE 355 (38.46%)
CLUB CANCELLED 8		TOTAL FAMILY UNIT MEMBERS 229
OTHER 85		FAMILY MEMBERS PAYING HALF DUES 117
<b>TOTAL 120</b>		